



INDIAN SCHOOL AL WADI AL KABIR

POST MID-TERM EXAMINATION-2023-24

CLASS: VIII

Sub: SCIENCE

MAX.MARKS: 30

DATE: 03-12-2023

Set -II

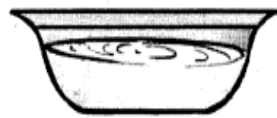
TIME: 1 HOUR

General Instructions:

- i. All questions are compulsory. Marks are indicated against each section.
- ii. The question paper comprises 4 **pages** and 15 questions in 5 sections A, B, C, D and E.
- iii. Q 1 to Q 4 in **section A** -MCQ and carry ONE mark each. Write the correct answer along with the option only in the answer script.
- iv. Q 5 to Q 7 in **section A** -Assertion and Reason carry ONE mark each.
- v. Q 8 to Q 10 in **section B** are short Answer Type Questions and carry TWO marks each.
- vi. Q 11 to Q 13 in **section C** are Short Answer Type Questions and carry THREE marks each.
- vii. Q 14 in **section D** is a Long Answer Type Question and carries FIVE marks.
- viii. Q 15 in **section E** is a Case study/paragraph Question and carries THREE marks.
- ix. Write the same question number as given in the question paper.
- x. Whitener should not be used in the answer script.
- xi. Diagrams should be drawn using a pencil.

SECTION A (1X7=7)

1. Observe the figure and mention the reason that causes the dough to rise when yeast is added to it.



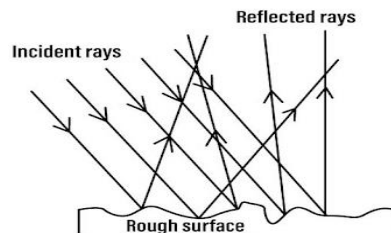
Maida with yeast powder



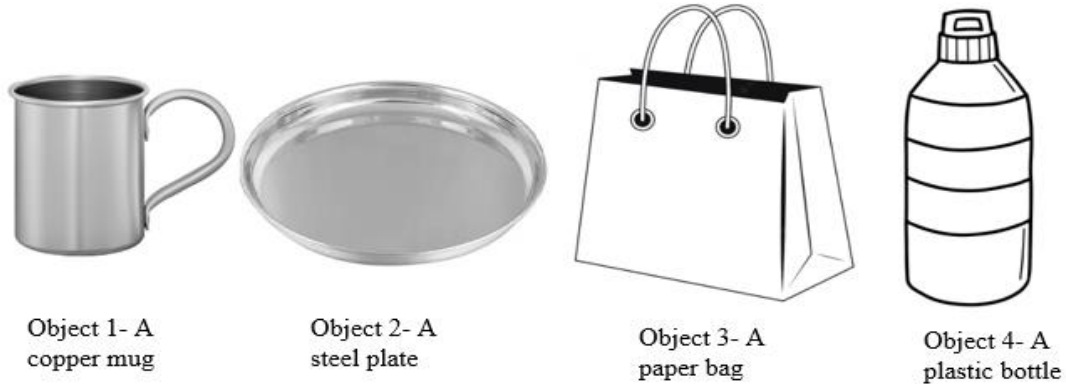
Raised maida

- a. The release of carbon dioxide gas
 - b. The release of oxygen gas
 - c. The release of nitrogen gas
 - d. The release of hydrogen gas
2. In a phenomenon reflection of light from a surface occurs in such a way that a ray incident on the surface is scattered at many angles rather than at just one angle. Identify the phenomenon with the help of the given diagram.

- a. Regular reflection
- b. Irregular reflection
- c. Dispersion of white light
- d. Lateral inversion



3. Refer to the four objects below. Which among the following are sonorous?



- a. Object 3 only
- b. Object 2 only
- c. Objects 2 and 4
- d. Objects 1 and 2

4. When the angle between two plane mirrors is 30° . How many images will be formed by the mirrors?

- a. 10
- b. 11
- c. 14
- d. 15

For the following questions, two statements are given- one labelled Assertion (A) and the other labelled Reason (R). Select the correct answer to these questions from the codes (i), (ii), (iii), and (iv) as given below.

- i) Both A and R are true and R is the correct explanation of the assertion.*
- ii) Both A and R are true but R is not the correct explanation of the assertion.*
- iii) A is true but R is false.*
- iv) A is false but R is true*

5. **Assertion (A):** Water can be used to extinguish a fire caused by an electric short circuit.

Reason (R): Water is commonly used to control fire.

6. **Assertion (A):** We can see non-luminous objects around us.

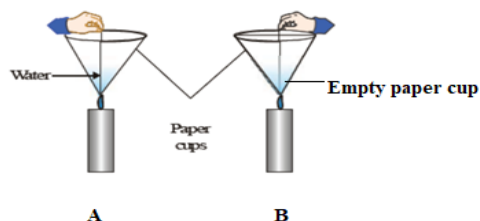
Reason (R): Light emitted by the non-luminous object falls on the eye.

7. **Assertion (A):** Milk is converted into curd by bacteria.

Reason (R): *Lactobacillus* promotes the formation of curd.

SECTION B (2X3=6)

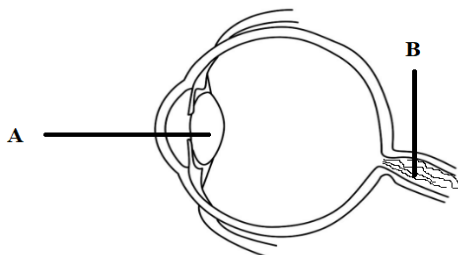
8. a. Give **any two** characteristics of an ideal fuel.
- b. Make two paper cups A and B by folding a sheet of paper. Pour about 50 mL of water into cup A. Heat both cups separately with a candle as shown in the figure. The empty cup burns immediately but the cup with water does not catch fire quickly. Why?



9. a. What is meant by malleability? Are non-metals malleable?
- b. Why is it a common practice to immerse sodium and potassium in kerosene for storage?
10. a. Distinguish between real and virtual images.
- b. State the laws of reflection of light.

SECTION C (3X3=9)

11. a. Give any two uses of metals.
- b. Rita bought a statue made of copper. To her surprise, it acquired a dull green coating after a couple of months. Write the word equation for this reaction.
- c. How can you confirm the presence of hydrogen gas when acids react with metals?
12. a. What are communicable diseases? Give any two examples of communicable diseases.
- b. Describe the role of Rhizobium in maintaining soil fertility.
13. a. How do rods and cones function in the eye?
- b. What happens when white light passes through a glass prism?
- c. Identify the parts A and B marked in the given diagram of the human eye.



SECTION D (5X1=5)

14. a. Draw a neat and labelled diagram of a candle flame and label the following:
- Hottest zone
 - Least hot zone
- b. Kerosene oil produces flame whereas coal does not produce a flame. Justify this statement.
- c. In an experiment, 4 kg of fuel was completely burnt. The heat produced was measured to be 20,000 kJ. Calculate the calorific value of the fuel.

SECTION E (3x1=3)

15. *Read the passage and answer the following questions:*

Whenever you fall ill, the doctor may give you some antibiotic tablets, capsules or injections such as penicillin. These medicines destroy or stop the growth of the disease-causing microorganisms. Such medicines are called antibiotics. These days several antibiotics are extracted from bacteria and fungi. Penicillin, streptomycin, tetracycline and erythromycin are some of the commonly known antibiotics.

Antibiotics are used to cure a variety of diseases. It is important to remember that antibiotics should be taken only on the advice of a qualified doctor. Also, you must complete the course prescribed by the doctor. If you take antibiotics when not needed or in the wrong doses, it may make the drug less effective when you might need it in future. Also, antibiotics taken unnecessarily may destroy the beneficial bacteria in the body. Antibiotics, however, are not effective against colds and flu as these are caused by viruses.

- What are antibiotics? Give an example.
- Name the group of microorganisms from which antibiotics are extracted.
- Mention any two precautions to be taken while using antibiotics.